



Adaptors

AdaptorsPage 2





Adaptors

P-AD

- Low insertion loss
- Low back reflection loss
- Easy to handle
- Environmentally stable

Applications:

- Telecommunications
- Local area network
- Fibre to the home
- Fibre optic sensors
- Testing instruments
- CATV

Ordering Information

P - AD - - - -

Connector Type

- AP...FC/APC type
- AS ...SC/APC type
- FC ...FC type
- OF...One piece FC type
- FA ...Die-cast FC type
- DA...D-hole FC/APC type
- DF ...D-hole FC type
- MD ...Miniature Double D-hole FC type
- FD ...FDDI type
- SC ...SC type
- ST ...ST type
- DC ...SC/APC Duplex type
- DS ...SC duplex type
- DT ...ST duplex type
- LC ...LC simplex type
- DL ...LC duplex type
- MU ...MU simplex type
- DM ...MU duplex type
- MR ...MTRJ type
- XX ...Others, please specify

Sleeve Material

- AMetal (Singlemode)
- BMetal (Multimode)
- CCeramic

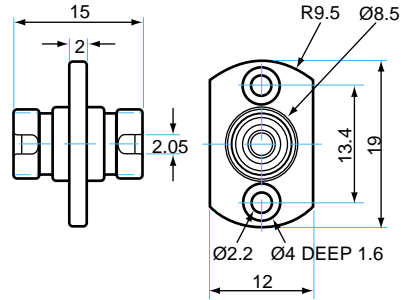
Connector Type

- AP...FC/APC type
- AS ...SC/APC type
- FC ...FC type
- OF...One piece FC type
- FA ...Die-cast FC type
- DA...D-hole FC/APC type
- DF ...D-hole FC type
- MD ...Miniature Double D-hole FC type
- FD ...FDDI type
- SC ...SC type
- ST ...ST type
- DC ...SC/APC Duplex type
- DS ...SC duplex type
- DT ...ST duplex type
- LC ...LC simplex type
- DL ...LC duplex type
- MU ...MU simplex type
- DM ...MU duplex type
- MR ...MTRJ type
- XX ...Others, please specify

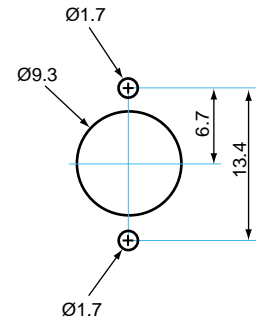
Specifications

Specifications	Adaptors			
		Ceramic	Bronze	
Singlemode			Multimode	
Sleeve Material				
Typical Insertion Loss	dB	0.1	0.1	0.3
Operating Temperature	°C		-40 ~+75	
Storage Temperature	°C		-55 ~+85	

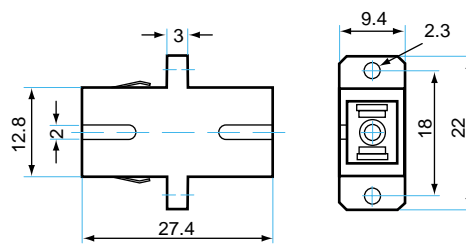
P-AD-AP-□-AP



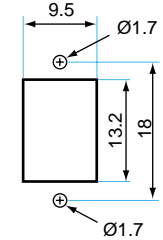
Recommended Panel Cutout



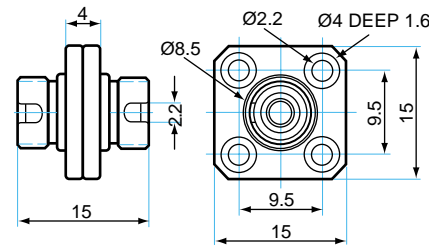
P-AD-AS-□-AS



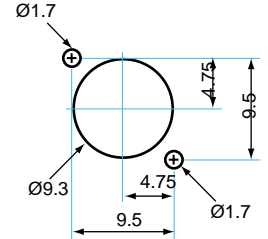
Recommended Panel Cutout



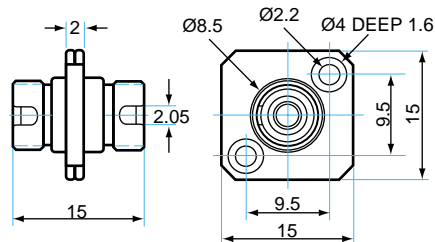
P-AD-FC-□-FC



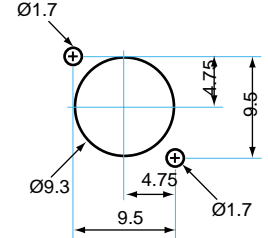
Recommended Panel Cutout



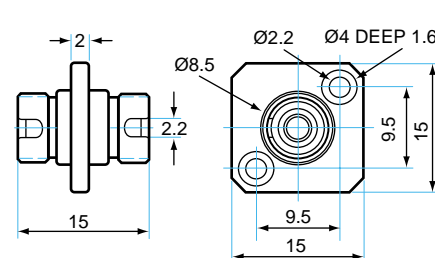
P-AD-OA-□-OA



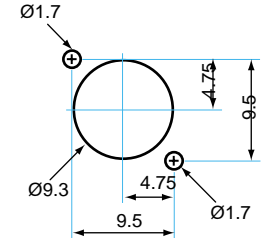
Recommended Panel Cutout

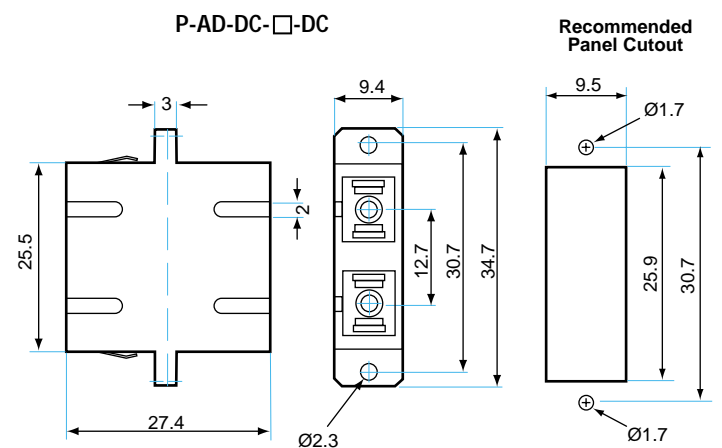
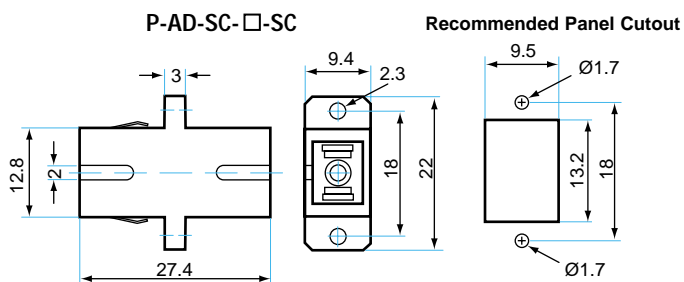
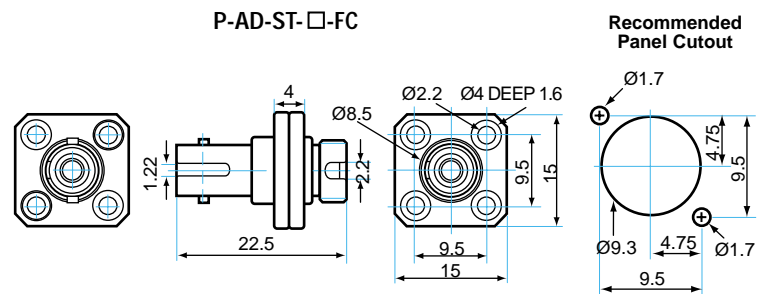
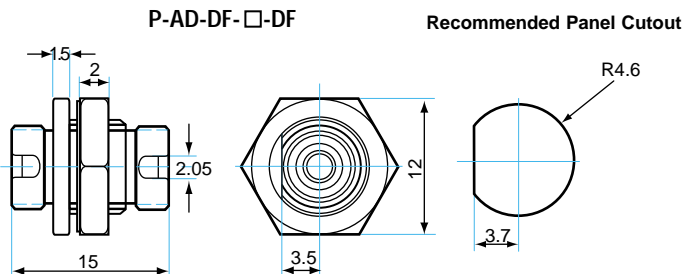
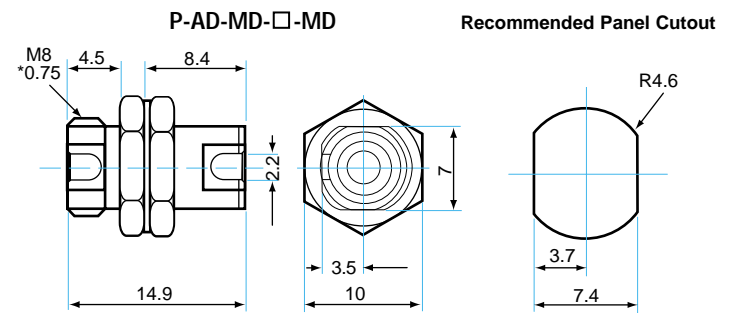
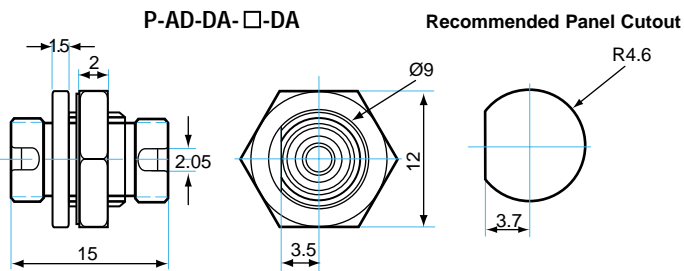
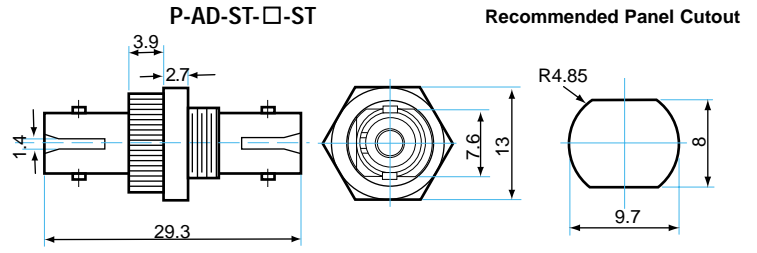
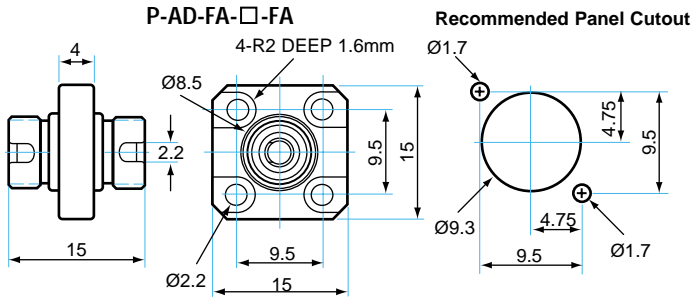


P-AD-OF-□-OF



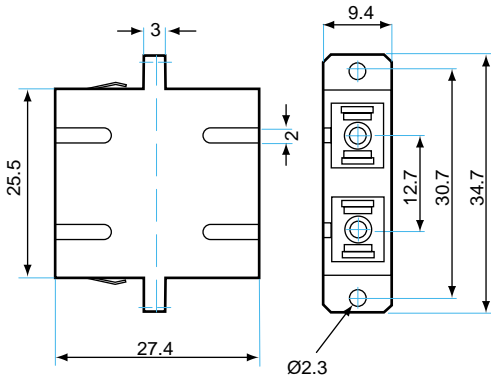
Recommended Panel Cutout



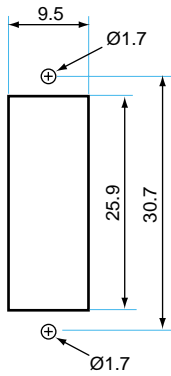




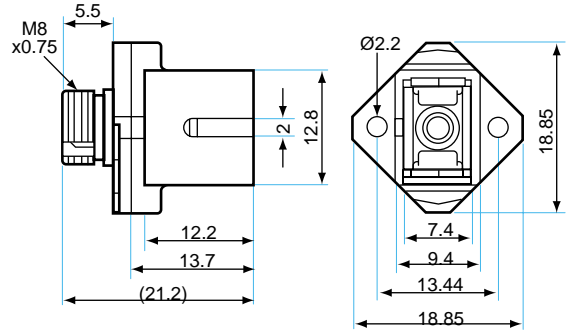
P-AD-DS-□-DS



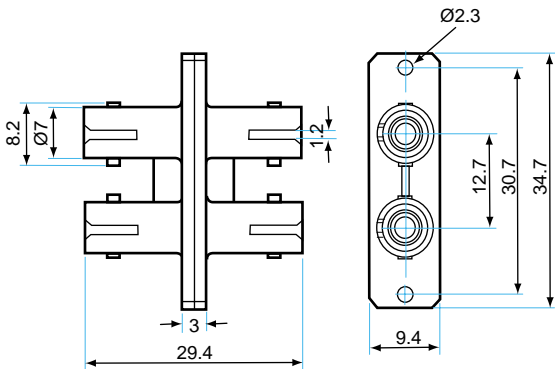
Recommended Panel Cutout



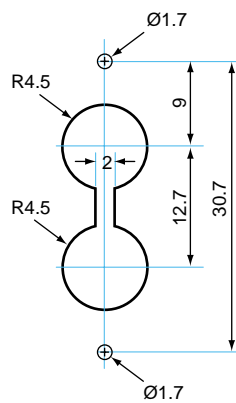
P-AD-FC-□-SC



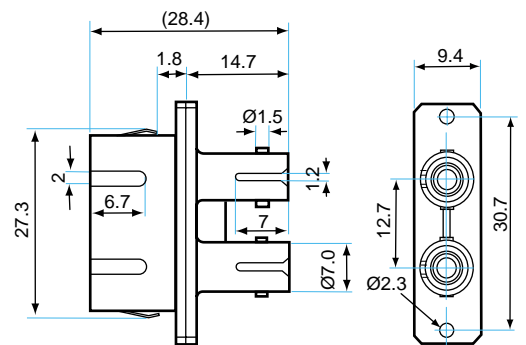
P-AD-DT-□-DT



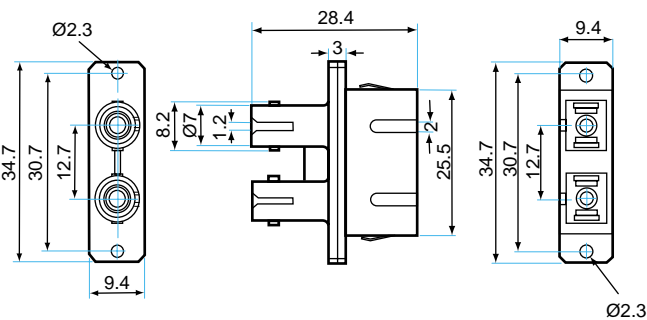
Recommended Panel Cutout



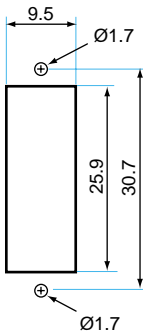
P-AD-SC-□-ST



P-AD-DS-□-DT



Recommended Panel Cutout



P-AD-MR-□-MR

