



Product Selection Guide

Beam Imaging/Profiling/ Focusing/Alignment/Collimation/Pointing/M²

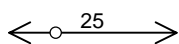
The Broadest Selection of Beam Diameters and Measurement Options.

- ❑ This *summary* guides you to the correct profiler for your beam.
- ❑ All systems feature comprehensive 1D, 2D & 3D beam profile displays, beam wander, & ISO 11146 compliant analysis.
- ❑ Put our extensive experience to work for you. Contact us for *solutions*. See Selection Request form at website.

SCANNING SYSTEMS

Select:	BeamScope™-P7 Scanning slits or pinhole: Probe head for narrow spaces; Rotating head mount option	Beam'R™ Scanning X-Y slits Slit & Knife-edge modes	BeamMap™ Real-time X-Y-Z plus θ-φ profiling
Profiling or Imaging	Precise, 0.1 μm resolution, 12-bit PROFILING		
	Versatile XY probe head 2D + M ² option	Precise XY	Focusing, Pointing, Collimation, M ²
CW or Pulsed	CW. Pulsed >5 kHz, high duty cycle	CW. Pulsed >100 kHz, high duty cycle	
190 - 1150 nm	Si detector		
800 - 1800 nm	Ge detector	InGaAs detector.	
1000 - 2400 nm	Extended Range InGaAs detector, 3 mm diam.		
1.5 - 4 μm	InAs detector- 2 mm diam.		
Profiles			
Line profile	Yes	Yes	
X profile	Yes	Yes unique patented capability	
X-Y profiles			
X-Y-Z profiles, plus θ-φ			
Area image	Yes: with 2DSS		
Best Resolution	0.1 μm 2.5 μm with 2 D Stage	0.5 μm	
Smallest Beam	5 μm 25 μm with 2-D Stage	0.5 μm	
Largest Beam	See imaged areas below this table		
Power Handling	See detailed data sheets or Selection Request form. With accessories, you can handle almost any power.		
Update Rate	1 to 2 Hz (2-D stage, 0.01 Hz)	3 Hz (Real Time)	
M² Measurement	Yes, with M2D Accessory		Yes- Real Time
Locate Focus	Must move source or head	Must move source or head	Yes, automatic for focused beams
Pointing/Divergence			ColliMate™ head
Collimation			
Dynamic Range	44 dB		45 dB
Portable	Yes with Magma Carbus adapter		

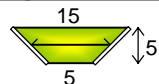
Scanned & imaged areas shown actual size. Dimensions in mm



Line Profile **BeamScope-P7** 5 to 100 μm Pinholes



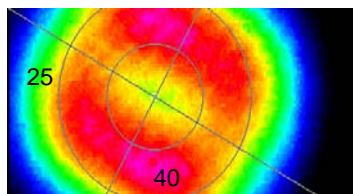
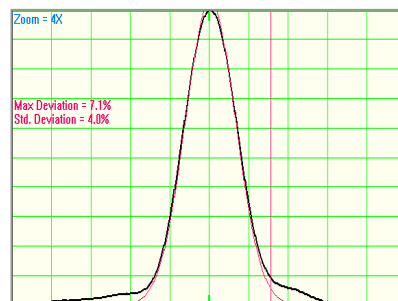
X Profile **BeamScope-P7** 2.5 to 100 μm Single Slits



X-Y Profiles **BeamScope-P7** 2.5 to 100 μm Dual Slits @ 90°



X-Y Profile **BeamMap/Beam'R** 2.5 to 100 μm Multiple Slits
(Si active area shown. 4 mm φ for InGaAs; 2.5 mm φ for InAs.)



BeamScope-P7 with M2D
Up to 1,000 x 1,000 pixels



Product Selection Guide

Beam Imaging/Profiling/ Focusing/Alignment/Collimation/Pointing/M²

The Broadest Selection of Beam Diameters and Measurement Options.

WinCamD™ Series IMAGING SYSTEMS

Select:	WinCamD-UCM	WinCamD-UHR	WinCamD-UHS	WinCamD Classic
	General Purpose	High Resolution	High Speed	High Resolution
Sensor	CMOS 1.3 MPixel 6.7 x 6.7 μm 10-bit ADC	CMOS 1.3 MPixel 5.2 x 5.2 μm 10-bit ADC	CMOS 310 kPixel 9.9 x 9.9 μm 10-bit ADC	CCD 1.4 MPixel 4.7 x 4.7 μm 14-bit ADC
Interface	USB 2.0 Port-powered ... no external power-brick			PCI card Serial link
CW or Pulsed?	CW. Any pulsed Laser- Auto Capture			
Shutter	Synchronous	Rolling	Synchronous	Synchronous
Single Pulse capture	~ 100 Hz	< 10 Hz	To 25 kHz	To 25 kHz
	With UV converter			
	Standard			
	-1310 version			
	With CamIR Adapter			
Imaged Area	2/3" CMOS 8.6 x 6.9 mm	1/2" CMOS 6.6 x 5.3 mm	1/2" CMOS 6.5 x 4.9 mm	1/2" CCD 6.5 x 4.8
	TaperCamD 14 x 10 mm; TaperCamD20-15 20 x 15 mm			
X-Y profiles	Yes to all			
Best Resolution	1 μm			
Smallest Beam Diam *	70 μm	50 μm	100 μm	50 μm
Largest Beam	See imaged areas below this table			
Power Handling	See detailed data sheets or Selection Request form. With accessories, you can handle almost any power.			
Update Rate	10 Hz	10 Hz	25 Hz	8 Hz
M² Measurement	Basic, with lens			
Locate Focus	Move source or camera			
Pointing/Divergence /Collimation	Use DualCamD			
Dynamic range	CW: 43.5 dB, Exposure 40 μs to 1 s; Pulsed: ≥7.5 dB			
Signal to RMS noise	500:1	1,000:1	1,000:1	1,000:1

* 10x pixel size

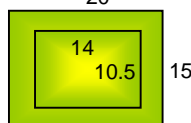
WinCamD-Classic
WinCamD-UHR
WinCamD-UHS



WinCamD-UCM



TaperCamD series
20



UV converter
IR converter

